

TEMPLE EMANU-EL Bulletin

Volume 80, Number 10

November 2, 2007

WORSHIP SERVICES

Friday evening, November 9 Temple Sanctuary

Organ Recital—5 P.M.

Sabbath Eve Service—5:15 P.M.

WQXR Radio (96.3 FM) and Internet
(www.wqxr.com) broadcasts—5:30 P.M.

As part of this week's Friday evening service, our rabbis will offer a **Veterans Day Sabbath Blessing**, during which any veterans of the armed forces in attendance will be invited to come up to the bimah.

Saturday morning, November 10 Women's Auxiliary Lounge

Torah Study—9:15 A.M.

Temple Sanctuary

Service—10:30 A.M.

Torah Portion—Tol'dot

Readings—Genesis 25:19-28:9

I Samuel 20:18-42

Sermon: Rabbi Maya Leibovich

Rabbi Maya Leibovich is the first Israeli-born woman to be ordained by the Hebrew Union College in Jerusalem, and she is one of the first rabbis to teach Reform Judaism in the former Soviet Union. For 12 years she has served as rabbi of Kehilat Mevasseret Zion, a family-oriented congregation in the suburbs of Jerusalem that was started in 1993 with six families and now boasts 200 families. We are thrilled to welcome Rabbi Leibovich as our guest preacher.



Hearing Loop installed in Temple Sanctuary and Beth-El Chapel; switch aid to T-coil. Headsets or neck loops also available for use.

MUSIC & LECTURE

RHAPSODY ON A HEBREW LOVE SONG

Tuesday, November 6

6 P.M.

The Women's Auxiliary invites all Temple members to a musical program and lecture highlighting sacred Jewish music that explores the many facets of love. Musical selections will include Jewish tunes from Israel, Corfu, Djerba, Crete and Poland in the Sephardic, Bukharan and Ladino traditions. A reception with wine and hors d'oeuvres will precede the program.

Dr. Jasmin Cowin will be the featured artist and lecturer. A trained German harpist, Dr. Cowin has served as principal harpist for several orchestras, including The New York Symphonic Arts Ensemble. She received her doctorate in education from Columbia University and is on the faculty of Hunter College. She also is a member of Emanu-El's music committee.



Dr. Cowin will be joined by **Renée Jolles** on the violin. Hailed as a "real star" by *The New York Times* for her New York concerto debut at Alice Tully Hall, Ms. Jolles has enjoyed a career as a solo artist and a chamber musician.

Enter at the Marvin and Elisabeth Cassell Community House, One East 65th Street. Questions? Call (212) 744-1400, ext. 235 or send an e-mail to womaux@emanuelnyc.org.

B'NEI MITZVAH

**The following students of
our Religious School will become
b'nei mitzvah this weekend:**

Julius Charles Heftler,
son of Jennifer Heller and Noah Heftler

Oliver Erik Rosen,
son of Diane and Matthew Rosen

**We are grateful for their sponsorship
of Friday evening's *Oneg Shabbat*.**

PULPIT FLOWERS

**Pulpit flowers at Sabbath services
this weekend are the generous
donation of our congregants:**

Diane and Matthew Rosen
in honor of their son *Oliver*
becoming a bar mitzvah

Barry, Patricia and Elizabeth Berkule
in loving memory of *Lee Berkule*

Mary L. Fleur
in loving memory of her brother,
Robert Thomas Schwartz

Judie and Howard Ganek
in loving memory of their father,
Reuben Goldstein

Richard H. M. and Gail Lowe Maidman
in loving memory of *Shirley Cohen*

*Inquiries to sponsor Pulpit Flowers or
an Oneg Shabbat should be directed
to (212) 744-1400, ext. 312 or
sponsorships@emanuelnyc.org*

Charles S. Salomon
The Universal Funeral Chapel
1076 Madison Avenue (212) 753-5300
Our service is available in the Temple, home, or our Chapel.

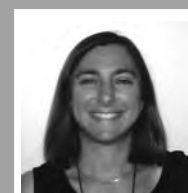
**SUNDAYS
at SKIRBALL**

Seminars are held
from 10 A.M. to 2 P.M.
Coffee and bagels are served.
Enter at One East 65th Street.
To register, call (212) 507-9580
or log on to our Web site at
www.adultjewishlearning.org.
Cost is \$50 per session.

SUNDAY, NOVEMBER 11

**HANNAH and SAMUEL
in JEWISH and CHRISTIAN
INTERPRETATION**

The stories of the barrenness of Hannah and the miraculous birth of her son, the prophet Samuel, are interpreted and retold in early Jewish and Christian interpretation. For the rabbis, Hannah is the model for Jews at prayer, while in the *Gospel of Luke*, Mary's prayer seems to be modeled on Hannah's prayer. After doing a close reading of the story in I Samuel, we will examine ancient and modern texts written by Jews and Christians that continue to make meaning out of this important story.



**Lecturer:
Marcie
Lenk**

MARCIE LENK is academic director of Hebrew College's Me'ah Program in the New York region.

SKIRBALL



The Skirball Center for Adult Jewish Learning at Temple Emanu-El

**The Cemeteries of Congregation Emanu-El
Salem Fields and Beth-El**

A limited number of above-ground crypts are available in our community mausoleum. For information, please call Dr. Mark W. Weisstuch at the Temple Office, (212) 744-1400.

FALL MITZVAH DAY: SUNDAY, NOVEMBER 11

Our Tikkun Olam committee invites all Temple members to join us in coming together as a community to help make a difference in the lives of those less fortunate.



9:30 A.M.

We begin with a congregational breakfast in I.M. Wise Hall. Enter at One East 65th Street.

Reconnect with old friends, make new friends. Learn more about the true meaning of mitzvah.

**SUGGESTED DONATION:
\$18 PER FAMILY.**

Three percent of the donation will be given to Mazon, a nonprofit organization that allocates funds from the Jewish community to prevent and alleviate hunger among people of all faiths and backgrounds.

MAKE CHECKS PAYABLE TO TEMPLE EMANU-EL.



Please note: Items for our special collections (new and gently used winter coats; bed sheets and bath towels; small suitcases, duffel bags and knapsacks; as well as eyeglasses and nonperishable foods) may be donated until Mitzvah Day ONLY.

10:30 A.M.

Mitzvah Projects begin. Congregants of all ages are invited to participate in a variety of community-service projects organized on-site.

LECHEM L'REYVIM:

- Help feed those who are hungry by making sandwiches or baking cookies.

BIKUR CHOLIM:

- Comfort those who are ill by knitting a blanket.
- Bring cheer to a sick child in the hospital by sending a message on a custom-made quilt.
- Bring a smile to a cancer patient with a specially packed gift basket.

PIKUACH NEFESH:

- Help save a life by giving blood.

QUESTIONS? CALL (212) 744-1400, EXT. 452.

OR, LOG ON TO THE EMANU-EL WEB SITE FOR MORE INFORMATION.

CUSTOMS & TRADITIONS

SUNDOWN ON this coming Saturday (November 10) marks the start of Rosh Chodesh for the month of Kislev. Rosh Chodesh means “the beginning [or “head”] of the month,” and as the Hebrew calendar is a modified lunar one, the month always begins with the appearance of the new moon.

During the days of the Solomonic Temple, Rosh Chodesh was marked by feasting. It was heralded by the blowing of the shofar and celebrated with peace offerings. After the destruction of the Second Temple, it became customary to announce Rosh Chodesh in the synagogue, on the Sabbath just before the new moon. *Hallel* (Psalms 113-118) were recited,



as was a special prayer invoking God’s blessing during the coming month.

The home ceremony for Rosh Chodesh is *Kiddush HaLevanah*, “sanctification of the moon.” In some Jewish communities, it is still the custom to make this blessing outdoors when the moon is visible.

The close attention paid to the new moon harkens back to ancient days in the Middle East. It is no small coincidence that the Arabic word for the crescent of the moon is *hila*, coming from the identical root of the Hebrew word *Hallel*, “to praise” or “psalms of praise.” Unquestionably, the earliest meaning of *Hallel* was “to praise the god of the moon.” Today, however, we use it as a word for praise of God.

TEMPLE EMANU-EL BULLETIN



November 2, 2007
Volume 80, Number 10
Web site: www.emanuelnyc.org

Dr. David M. Posner
Senior Rabbi

Amy B. Ehrlich
Associate Rabbi

Howard J. Goldsmith
Assistant Rabbi

Lori Corrsin
Cantor

Dr. Ronald B. Sobel
Senior Rabbi Emeritus

Marcia Waxman
President

Rabbi Leon A. Morris
*Executive Director,
Skirball Center for
Adult Jewish Learning*

Dr. Mark W. Weisstuch
Administrative Vice President

Mark H. Heutlinger
Administrator

Robyn W. Cimbol
Director of Development

Henry Fruhauf
Administrator Emeritus

Published weekly August 31 through June 6 by Congregation Emanu-El of the City of New York, formed by the consolidation of Emanu-El Congregation (founded 1845) and Temple Beth-El.

Postmaster, send address changes to: Temple Emanu-El Bulletin, One East 65th Street New York, NY 10065 (212) 744-1400 Periodicals Postage Paid at New York, NY USPS 891-160.

PERIODICALS POSTAGE
PAID AT NEW YORK, NY